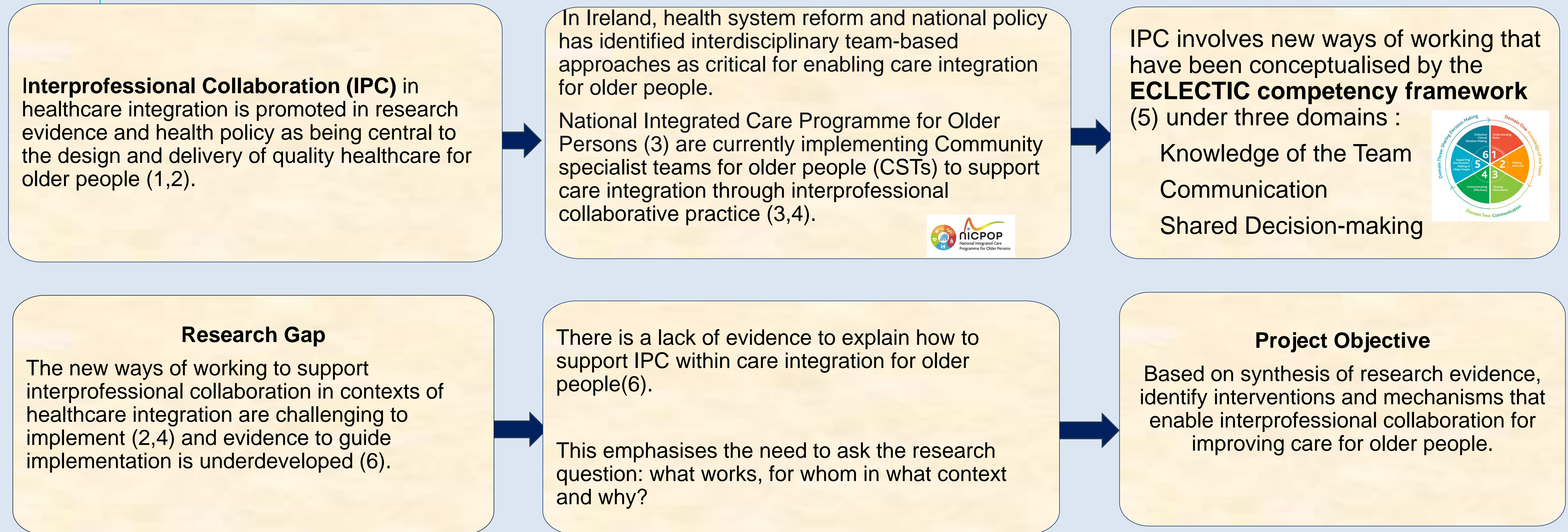


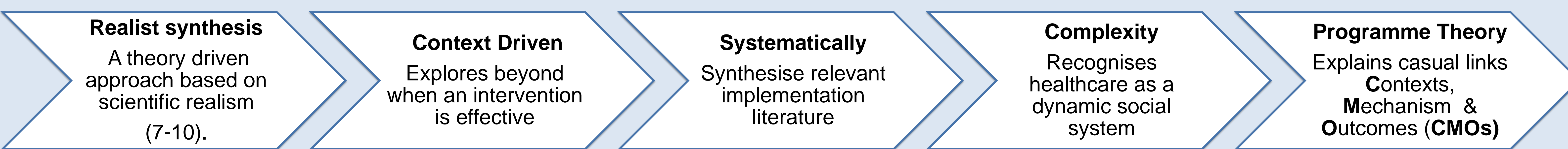
Interventions to promote effective interprofessional collaboration that improves care outcomes for older people: a realist synthesis of evidence.

Davies C¹, O'Donnell D¹, Radomska A¹, Ní Shé É³, O'Shea M¹, Devaney C², Donnelly S¹, O'Donoghue G¹, De Brún A¹, Whitty H², Harnett PJ², Lang D², Harrison R⁴, McAuliffe E¹, Ahern E²

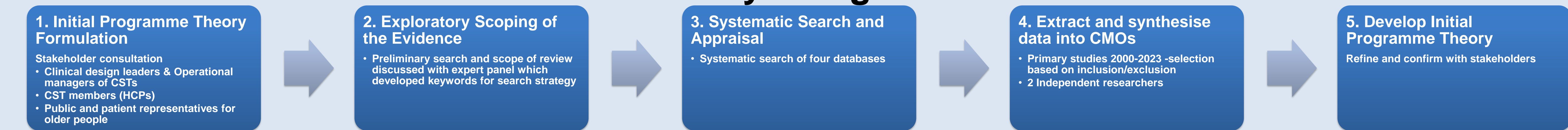
Background & Project objective



Method: Realist Synthesis & Study Design

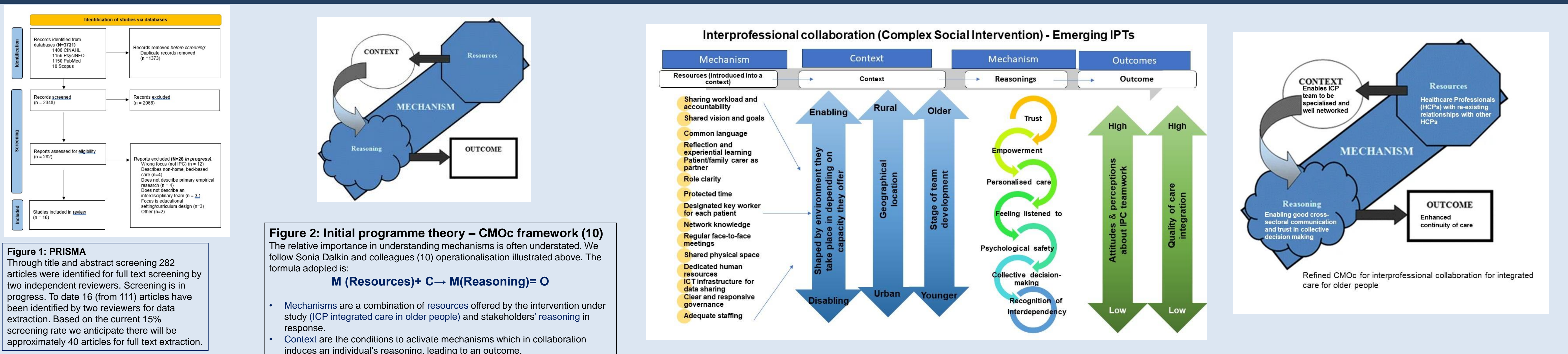


Study Design



Study design is guided by a five steps process (7,11). Exploratory scoping phase (steps 1-2), Systematic search, appraisal and synthesis phase (steps 3-5). The synthesised evidence will be reviewed and developed into initial programme theories.

Findings : Initial Programme Theory



Conclusion

This work is ongoing as part of a multiphase realist evaluation. The finalised IPTS will be tested and further refined through empirical exploration using case study analysis with CSTs implemented recently in Ireland (3) to support scale-up efforts across the Irish health system.

The emerging findings contribute for others adopting similar work some contextually relevant evidence that will inform a roadmap for implementation planning to support workforce planning, capacity building and competency development to improve older people health services.

References

- Science Advice for Policy by European Academics. (2019). Transforming the future of ageing. In Science Advice for Policy by European Academics. Retrieved April 14, 2023, from <https://sapea.info/topic/ageing/>
- Health Organisation. (2016). Health workforce for ageing populations 2016.
- Department of Health. (2021). Sláintecare Implementation Strategy and Action Plan 2021-2023. Government of Ireland. Retrieved March 27, 2023, from <https://www.gov.ie/en/publication/6996b-slaintecare-implementation-strategy-and-action-plan-2021-2023/>
- Ní Shé, E. N., O'Donnell, D. E., O'Shea, M., & Stokes, D. (2020). New Ways of Working? A Rapid Exploration of Emerging Evidence Regarding the Care of Older People during COVID19. *International Journal of Environmental Research and Public Health*, 17(18), 6442.
- O'Donnell, D., O'Donoghue, G; Ní Shé, E; O'Shea, M; Donnelly, S. (2023). Developing competence in interprofessional collaboration within integrated care teams for older people in the Republic of Ireland: A starter kit, *Journal of Interprofessional Care*, 37(3), 480-490.
- Ellis, G., & Sevdalis, N. (2019). Understanding and improving multidisciplinary team working in geriatric medicine. *Age And Ageing*, 48(4), 498-505.
- Pawson R, Tilley N. (1997). *Realistic evaluation*. London: SAGE.
- Rycroft-Malone, J., McCormack, B., Hutchinson, A.M. et al. (2012). Realist synthesis: illustrating the method for implementation research. *Implementation Sci* 7, 33.
- Wong, G., Westhorp, G., Manzano, A., Greenhalgh, J., Jagosh, J., & Greenhalgh, T. (2016). RAMESES II reporting standards for realist evaluations. *BMC Medicine*, 14(1).
- Dalkin, S.M., Greenhalgh, J., Jones, D. et al. (2015). What's in a mechanism? Development of a key concept in realist evaluation. *Implementation Sci* 10, 49.
- Kantlial, K., Hardeman, W., Whiteside, H., Karapanagiotou, E., Small, M., & Bhattacharya, D. (2020). Realist review protocol for understanding the real-world barriers and enablers to practitioners implementing self-management support to people living with and beyond cancer. *BMJ open*, 10(9).

Author affiliations:
¹ University College Dublin, Dublin 4, Ireland
² National Clinical Programme for Older Persons, Ireland
³ Royal College of Surgeons of Ireland, Dublin, Ireland
⁴ Macquarie University, Sydney, Australia

Partners:
 • Health Service Executive (HSE)
 • National Integrated Care Programme for Older Persons (NICPOP)
 • Age Friendly Ireland
 • Family Carers Ireland

Acknowledgement:
 • Funding body: Health Research Board, Ireland.

Correspondence:
 Dr Carmel Davies (author) or Dr Deirdre O'Donnell (Principal Investigator)
 School of Nursing Midwifery & Health Systems University College